

38 ft 1995 Grand Banks Eastbay 38EX, BLENDED

US\$195,000

Essex, Connecticut, United States



Boat Details

Make:	Grand Banks	Class:	Downeast	Cabins:	2
Model:	Eastbay 38EX	Hull Material:	Fiberglass	Berths:	4
Year:	1995	Drive Type:	Direct Drive	Heads:	1
Length:	38 ft	Beam:	13 ft 2 in	Fuel Type:	Diesel
Price:	US\$195,000	Boat Location:	Essex, Connecticut, United States		
Condition:	Used	Name:	BLENDED		



Leslie Quarrier | Essex Yacht Sales

Dauntless Shipyard, Essex, Connecticut, United States

Tel: (860) 767-3013 Fax: (860) 760-6797

leslie@essexyachtsales.com

www.essexyachtsales.com

Description

A rare example of the C. Raymond Hunt designed 38 Express, Hull # 15, BLENDED is perfect for a family or a couple with occasional guests.

Featuring Twin Caterpillar 3208TA 435 hp (Approx. 2,780 hr.) and a Westerbeke 5kW Generator (1,602 hr.), BLENDED has been cruised and enjoyed in Northern waters. With Bow Thruster, 12,000 BTU A/C and Heat, New Garmin Color Chartplotter/GPS w/Garmin GMR Fantom 18 Radar, Autopilot, AIS, Grunert Refrigeration, Bimini Top, Comfortable Helmdeck and Cockpit, BLENDED is seriously for sale and ready for her next owner to enjoy!

Information & Features

Caterpillar 3208TA (Engine 1)

Type:	Inboard	Drive Type:	Direct Drive	Propeller Material:	Bronze
Fuel Type:	Diesel	Power:	435 hp	Rope Cutter:	true
Hours:	2726	Propeller Type:	4 Blade		

Caterpillar 3208TA (Engine 2)

Type:	Inboard	Drive Type:	Direct Drive	Propeller Material:	Bronze
Fuel Type:	Diesel	Power:	435 hp	Rope Cutter:	true
Hours:	2783	Propeller Type:	4 Blade		

Dimensions

LOA:	41 ft 2 in
LWL:	34 ft 5 in
Beam:	13 ft 2 in

Weights

Displacement:	25,900 lb
---------------	------------------

Tanks

Fuel:	366 gal
Fresh Water:	95 gal
Holding:	20 gal

Accommodations

Twin Berths:	2
Cabins:	2
Heads:	1

Other

Hull Shape:	Deep Vee	Builder:	Grand Banks Yachts
Flag Of Registry:	United States		
Designer:	C. Raymond Hunt Associates		

ACCOMMODATIONS

Sleeps a total of 4. Private comfortable owner's V-berth stateroom forward, with A/C and Heat with Dometic Cruisair SMXII Control. V-berth filler, four drawers, two drop-face lockers. On both sides, above the berth, the hull is lined with varnished teak ceilings, storage with teak doors, and full-length under deck storage cabinets port and starboard. 32" Philips HD Smart TV. Aft to starboard is a bureau with three large drawers. Access to the chain locker, if required, is in the forward bulkhead. USB ports and 110V outlets.

Next aft and to port, is the enclosed head with shower (draining to a separate sump with pump), a large Corian vanity with sink, pressure hot and cold water, mirror, storage in two drawers and several lockers. The head is a Sealand Vacuflush fresh water head. 110V outlets.

Moving aft is the U-shaped dining settee with storage under, and shelves and lockers above. The pedestal-type teak dining table can be lowered to convert the settee to a double berth. There is a filler piece cushion. This table also can be removed. Electrical distribution panels are on the bulkhead above the aft end of the settee. There are curtains on all opening stainless steel ports. Samsung 21.5" LED HD TV. 110V outlets, USB Outlets, Weems and Plath Chronometer/Tide Clock and Barometer.

To port is the U-shaped galley with abundant counter and storage space. Corian counters with a single polished stainless steel sink, hot and cold pressure water, Princess three-burner electric stove with oven and broiler, Grunert cold plate refrigerator with freezer compartment and Grand Banks teak door. The galley also features numerous lockers and drawers, top loading dry storage areas, and an insulated top-loading icebox (to which a refrigeration/freezer system could be easily added.) 110V outlets, Fusion Marine Receiver MS-IP700i.

The bright Herreschoff interior features white bulkheads, teak trim and a teak parquet sole. Grand Banks varnished teak cabinetry is throughout.

Up three steps to the helm deck, featuring the helm station to starboard with full instrumentation, electronics, stainless steel wheel, new helm seat and teak sole. 110V and USB Outlets. To port is a full-length comfortable L-shaped settee with bin storage under. Forward of the L-settee is an additional locker, above which is the traditional varnished Grand Banks chart locker. Engine room access is through a powered hatch in the teak helmdeck sole.

Overhead, the custom heavy-duty Bimini frame (which also supports the radar), with Sunbrella top and side enclosures, provides enclosure for the helmdeck and protection from the elements and sun. Opening lower section of Center Windshield.

Steps lead out to the teak cockpit with three large storage lazarettes, hot and cold shower, and a sturdy transom door leading to the teak swim platform.

Steps lead forward, port and starboard, to nonskid side decks, with sturdy, safe double-braced rail and to the foredeck with windlass and chain locker. The cabin top Bomar hatches and the side opening ports provide additional interior ventilation and light.

GALLEY

- U-Shaped Galley
- Grunert Refrigeration, Freezer w/Grand Banks Teak Door
- Princess 3-Burner Electric Stove w/Oven and Broiler
- Princess Microwave Oven
- Large Stainless Steel Sink
- Hot and Cold Pressure Water
- Ample Counter and Storage Space
- Icebox
- Fusion Marine Receiver MS-IP700i
- 110V Outlets

ELECTRONICS

- Custom Varnished Teak Electronics Console
- Garmin Touch Screen GPS/Chartplotter GPSMap 1243xsv (2021)
- Garmin GMR Fantom 8 Radar (2021)
- Raymarine ST 6002 Autopilot
- Robertson Dataline Depthfinder
- Robertson Dataline Speed/Depth Log
- Ritchie Compass
- Robertson Dataline Central Display and AIS
- Standard Horizon Matrix AIS+ GX2150 VHF
- Fusion Remote Control MS-NRX200i Repeater
- Handhelm Searchlight Control
- Handheld Bow Thruster Control
- Weems and Plath Chronometer/Tide Clock & Barometer
- Speakers

ELECTRICAL, MECHANICAL and PLUMBING

- Twin Caterpillar 3208TA 435 hp Diesels, Approximately 2,780 Hours
- CAT 2,000 Hr. Service Performed (2014)
- After-Coolers Serviced (2022)
- Regular Annual Servicing
- Engine Controls (Throttles and Gear Shifters) Updated (2017)
- Block Warmers
- Twin Disc Transmissions
- Hydraulic Steering
- Glendinning Synchronizer
- Side Power Bow Thruster w/Remote
- Electro-Hydraulic Hatch to Engine Room
- Rule High Water Alarm
- Racor Fuel Filters
- Drive Savers
- Dripless Shaft Seals
- 12,000 BTU Reverse/Cycle A/C
- Sealand Vacuflush System w/12V Macerator Pump
- 20 Gallon Holding Tank
- Tank Watch for Holding Tank
- 110V & Engine-supplied 18 Gallon Seaward Hot Water Heater
- Salt Water Pressure Washdown
- (3) Rule 2000 Electric Bilge Pumps
- (1) Manual Bilge Pump
- Hynautic Hydraulic Steering
- Wema Fuel & Water Indicators
- 4 Bladed 24" Propellers on 2" S/S Shafts
- Line Cutters
- 12V DC/120V AC Systems
- Westerbeke 5kW Diesel Generator (Approx. 1,602 hr.)
- 12V DC & 110V AC Circuit Panels w/Breakers
- (2) 8D AGM Engine & House Batteries (2021)
- (1) Group 27 Battery (2021)
- (1) Bow Thruster Battery
- (2) 110 Amp Alternators
- 110V AC Outlets
- Mastervolt PowerCharger 12/40-3 Battery Charger
- 50 Amp Shore Power Connection Aft
- 50' 50 Amp Shore Power Cord

- Additional 30 Amp Shore Power Cord
- Grunert Refrigerator w/Freezer
- Princess 3-Burner Electric Stove w/Oven & Broiler
- Princess Microwave Oven
- Hot & Cold Pressure Water
- Hot & Cold Pressure Shower at Transom

HULL and DECK

- Flag Blue Awlgrippped Fiberglass Deep V Hull
- Solid Glass Hull, Chines to Keel, Cored Above for Weight Savings, Panel Stiffness & Noise Attenuation.
- White Awlgrippped Boot Stripe
- Fiberglass Decks w/"Moon Dust" Awlgrip Non-skid on Side & Fore Decks
- Stainless Steel Windshield w/Opening Center Window
- Windshield Wipers
- Teak Overlay on Cockpit & Helm Decks
- The Full-Width Cockpit Allows Ample Room For Deck Chairs & Tables
- New Helm Seat (2021)
- L-Shaped Settee Portside w/Storage Underneath
- Grand Banks Varnished Chart Locker, w/Storage Underneath
- Up Two Steps From Cockpit are Generous Side Fiberglass Non-Skid Decks
- Polished Stainless Steel Safety Rails Along Decks
- Varnished Teak Toe Rails
- Varnished Teak Brow On Cabin Sides
- Stainless Steel Bow Pulpit, w/Teak Trim
- Triple Kahlenberg Air Horns
- LED Searchlight
- Maxwell 800 12V Windlass w/Helm & Foredeck Controls
- 35 lb CQR Anchor w/Chain Rode
- (2) Bow Fender Lockers
- (3) Large Deck Lazarettes
- Sunbrella Helmdeck Canvas For Chart Table and Drink Holder
- Custom Stainless Steel Radar Arch w/Sunbrella Bimini Top
- Side Enclosures
- Helmdeck & Exterior Cockpit Cushions
- Varnished Teak Flag Staff
- Varnished Teak Yacht Club Burgee Staff
- Varnished Teak Grate Helmdeck Table
- Hubbel TV/Phone Dock Connection
- Teak Swim Platform
- Bennett Trim Tabs
- Spur Line Cutters
- Swim Ladder
- Transom Door
- Hot & Cold Cockpit Shower
- Fenders
- Docklines

- Bell
- Flare Kit
- Life Ring
- PFDs
- Fire Extinguishers

EXCLUSIONS

Exclusions to Inventory shall be: Personal Effects and any Items not specifically mentioned in the above Inventory.

DISCLAIMER

The Company offers the details of this vessel in good faith but cannot guarantee or warrant the accuracy of this information nor warrant the condition of the vessel. A buyer should instruct his agents, or his surveyors, to investigate such details as the buyer desires validated.

Potential purchasers should assume that items on the vessel at the time of viewing, but not specifically listed on this specification sheet, are not included with the sale of the yacht. These specifications are believed to be correct but cannot be guaranteed. Specifications are provided for information purposes. Data was obtained from sources believed reliable but is not guaranteed by owner or brokers. Buyer assumes responsibility to verify all speeds, consumption, capacities and other measurements contained herein and otherwise provided and agrees to instruct his surveyor to confirm such details prior to purchase.

Vessel subject to sale, price and inventory changes, and withdrawal from market without notice. Engine hours are as of the date of the original listing and are a representation of what the listing broker is told by the owner and/or actual reading of the engine hour meters. The broker cannot guarantee the true hours. It is the responsibility of the purchaser and/or his agent to verify engine hours, warranties implied or otherwise and major overhauls as well as other representations noted on the listing brochure.



Spacious Aft Cockpit - Step Aboard



Triple Kahlenberg Air Horns



Anchor and Windlass



Sturdy Rails



Ship's Bell



Remote-Control LED searchlight



Extensive Helmdeck Seating



New Captain's Seat and Foot Rest



Excellent Teak Decks



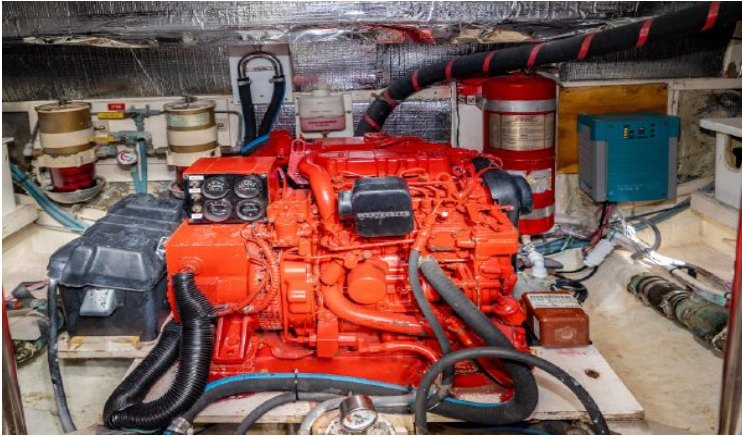
Well-Appointed Helm



Upgraded Engine Controls



Clean CAT 3208TA (Port) Engine



Westerbeke 5kW Generator



Entering Comfortable Accommodations Below



Dinette w/Hi-Lo Table, Converts to Berth



Beautifully Fitted Galley



Bright, Fresh, Head, Large Vanity



Forward Berth and Adjacent Head



Vee Berth (Has Filler)